



# DRAINTUBE

## AT WORK

A DRAINTUBE™ Case Study

## Environmental Applications

**DRAINTUBE™** geocomposite have been specified by Consultants Enviroconseil to collect the Landfill Gas under the geomembrane capping of St Etienne des Grés landfill, QC.

Using **DRAINTUBE™ 400P TF1 D25** geocomposite as LFG collection layer under the geomembrane allowed to save 200 mm (8") of drainage sand with a minimum required hydraulic conductivity of  $1 \times 10^{-3}$  cm/s. The 200 mm (8") daily cover has been taken into account as part of the gas drainage layer to reach the required thickness of 300 mm (12").

**DRAINTUBE™** has been directly connected to the smooth HDPE collector pipes using Quick Connect System. No collector trenches required. Quick Connect system allows a positive connection between the mini-pipes of the product and the HDPE pipe for an improved LFG collection and less head losses.

Quick Connect System

**Product:** DRAINTUBE™ 400P TF1 D25 for LFG collection

**Year:** 2016

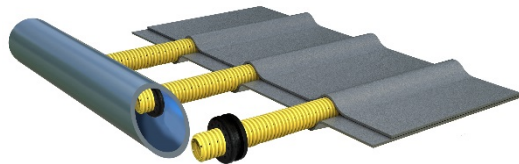
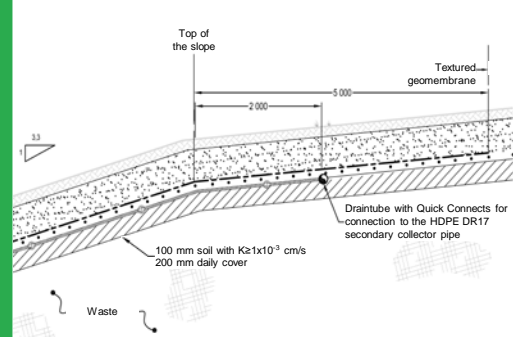
**Owner:** Régie de gestion des matières résiduelles de la Mauricie

**Engineer:** Enviroconseil

**Geosynthetics Installer:** Texel Geosol

**Total Area:** 23,000 m<sup>2</sup> (250,000 sf)

**Connection to the collector pipes using Quick Connect System**



info@draitube.net  
WWW.DRAINTUBE.NET



Produced by:



**DRAINTUBE™, the drainage YOU want!**